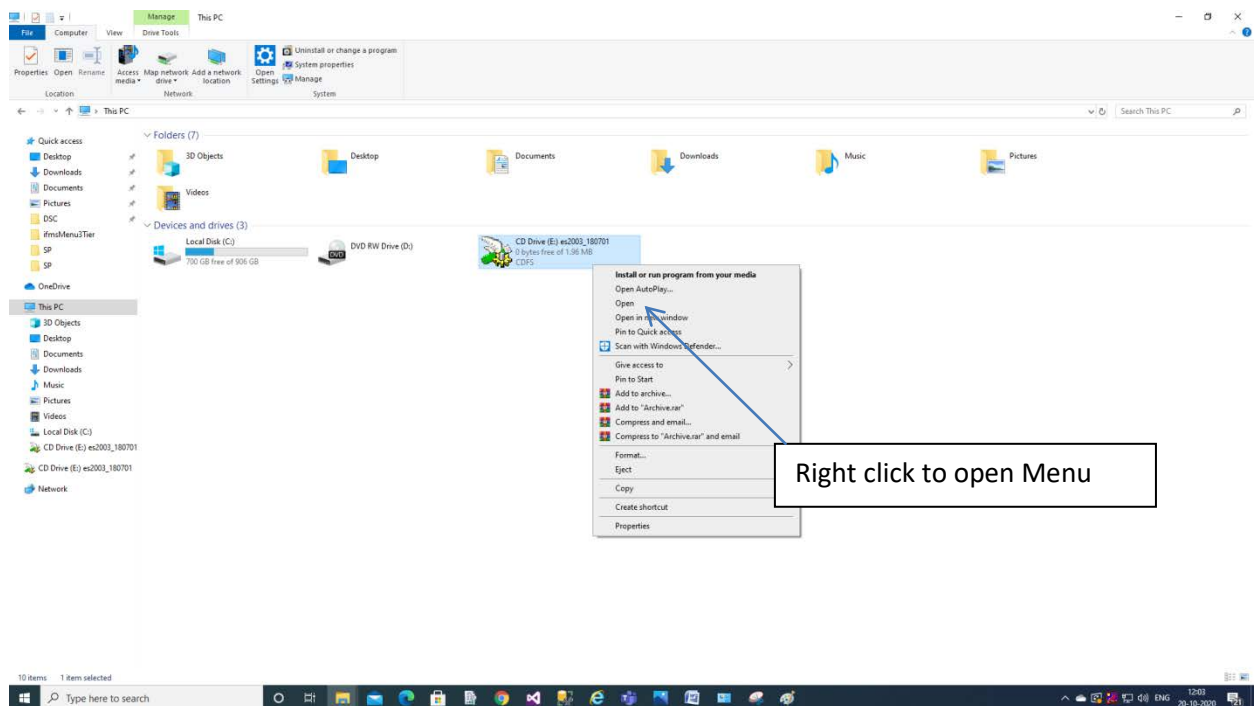


Integrated Financial Management System

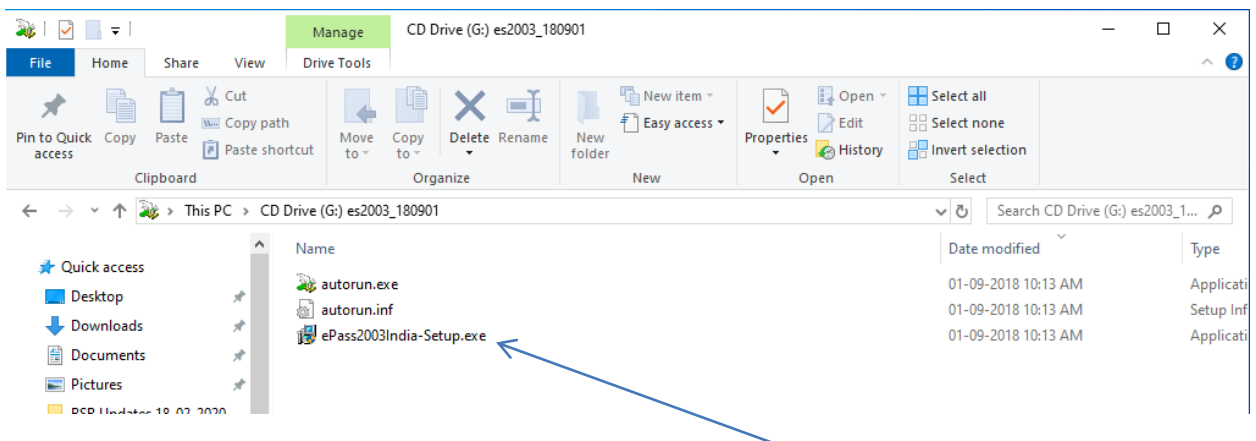
1. DSC Device Setup Manual

To install the DSC Device, Please follow the steps given below. To install the DSC device on your pc insert the DSC device into usb port of your pc then open "My Computer". As shown in figure 1.1.



(Figure 1.1)

Figure 1.1 shows the inserted DSC device, right click on the highlighted icon and select (**open**) from the shown menu. This will open the device as shown in below figure 1.2.

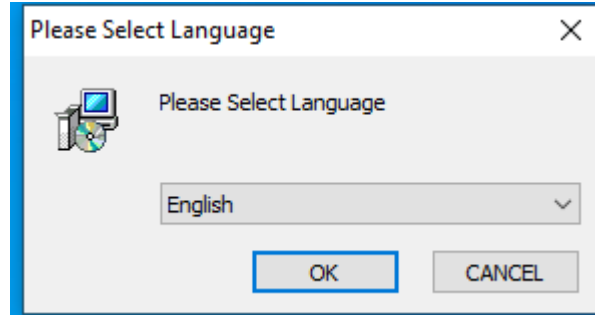


Integrated Financial Management System

(Figure 1.2)

Click to install the DSC

As shown in figure 1.2 click on (**setup.exe**) to install the device. This will launch the setup wizard to install the setup as shown in figure 1.3 and Please follow the setup wizard instructions.



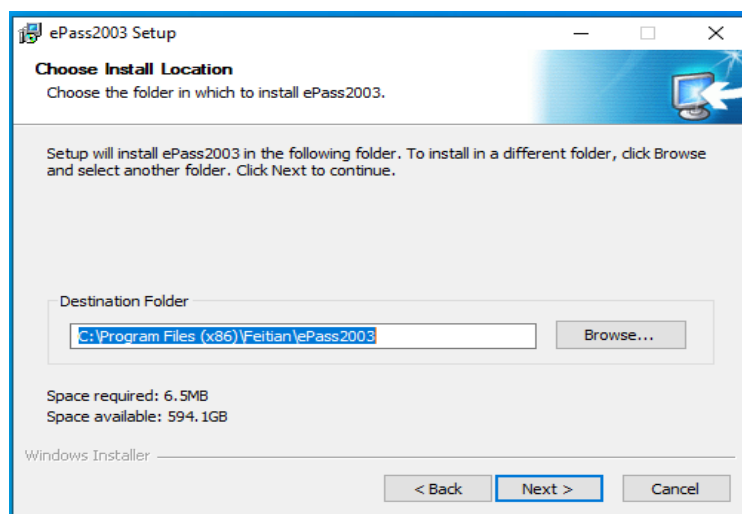
(Figure 1.3)

As shown in figure 1.4 click on (**Next**) button to proceed the setup.



(Figure 1.4)

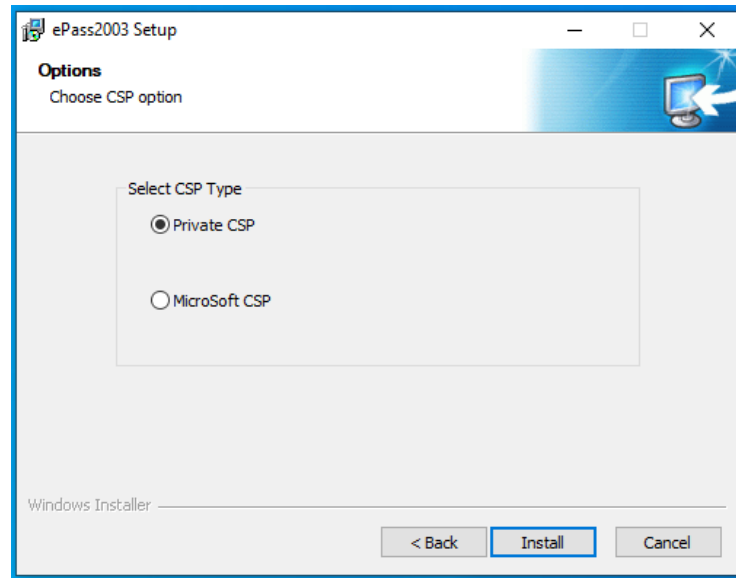
As shown in figure 1.5 Click on (**Next**) button to go for next step in installation.



(Figure 1.5)

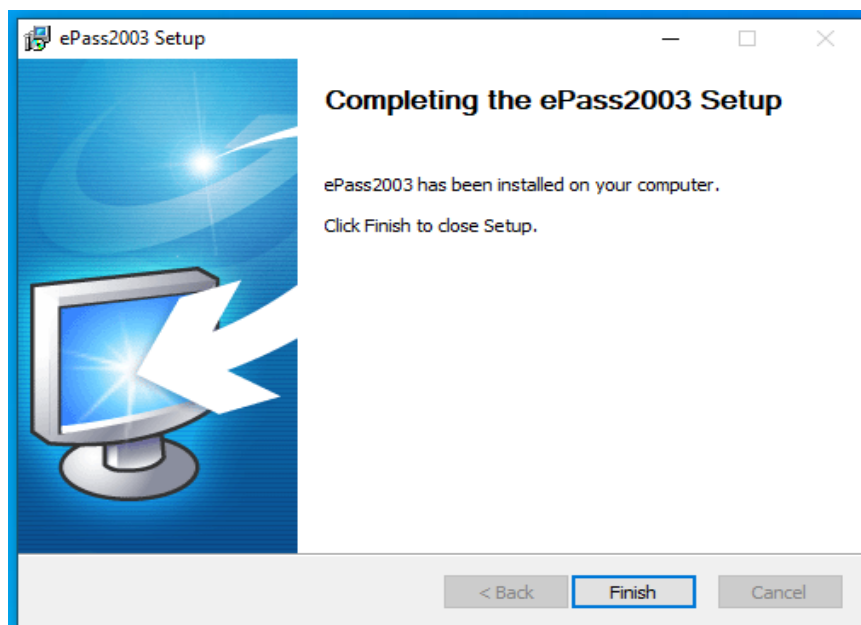
Integrated Financial Management System

As shown in figure 1.6 Click on (**Install**) button to start installation.



(Figure 1.6)

As shown in figure 1.7 Click on (**Finish**) button to complete the installation of DSC Device.



(Figure 1.7)

Now your have finished the installation of your DSC device. But to use the device please download and install the DSC Setup as shown in below figure 1.8. Please follow the instruction as guided in below.

Integrated Financial Management System

2. DSC Setup Manual

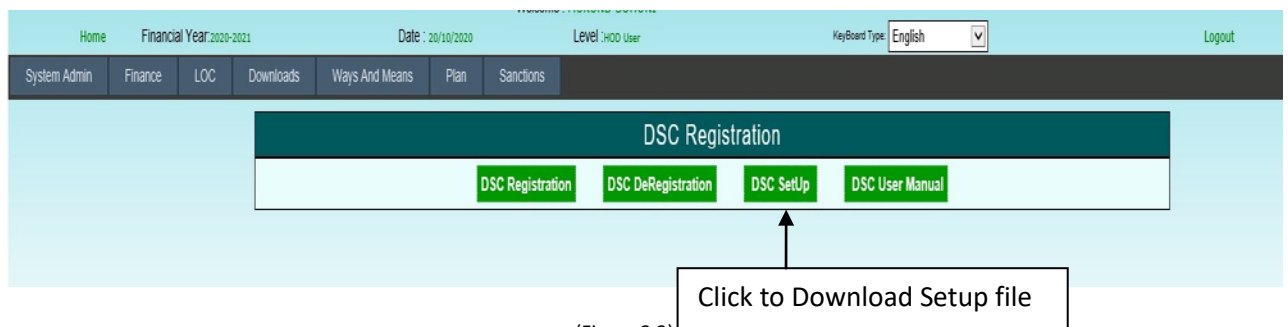
To Register DSC, Please use Internet Explorer and follow the setp given below.

Login into the system and click on DSC Regstration link as shown in belwo figure 2.1.



(Figure 2.1)

This link will open the page (**DSC Registration**) as shown in figure 2.2 .



(Figure 2.2)

As shown in above figure (2.2) click on (**DSC Setup**) button to download the setup file for installation.

After clicking on this, setup file will get download as shown in below figure 2.3.

Integrated Financial Management System

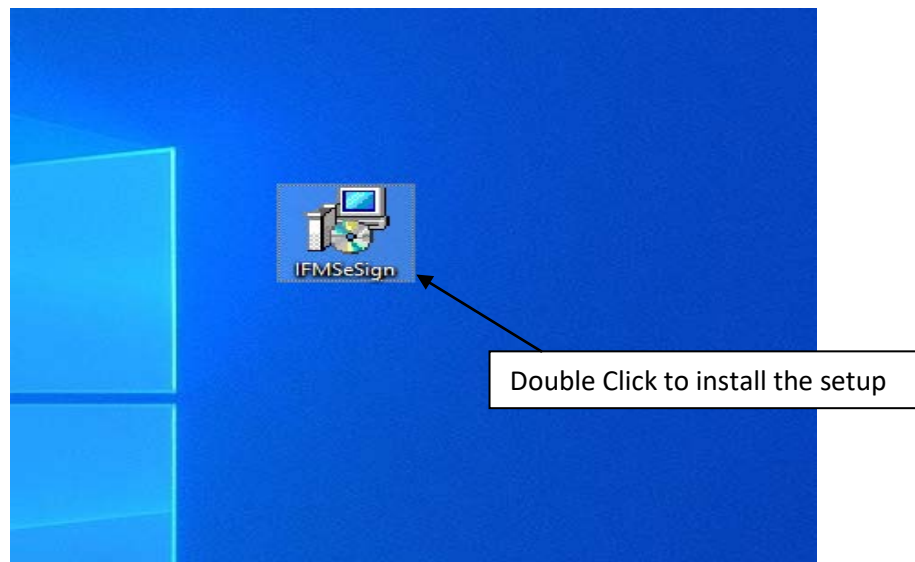


(Figure 2.3)

Click to Run
the Setup

Click to save the
Setup file

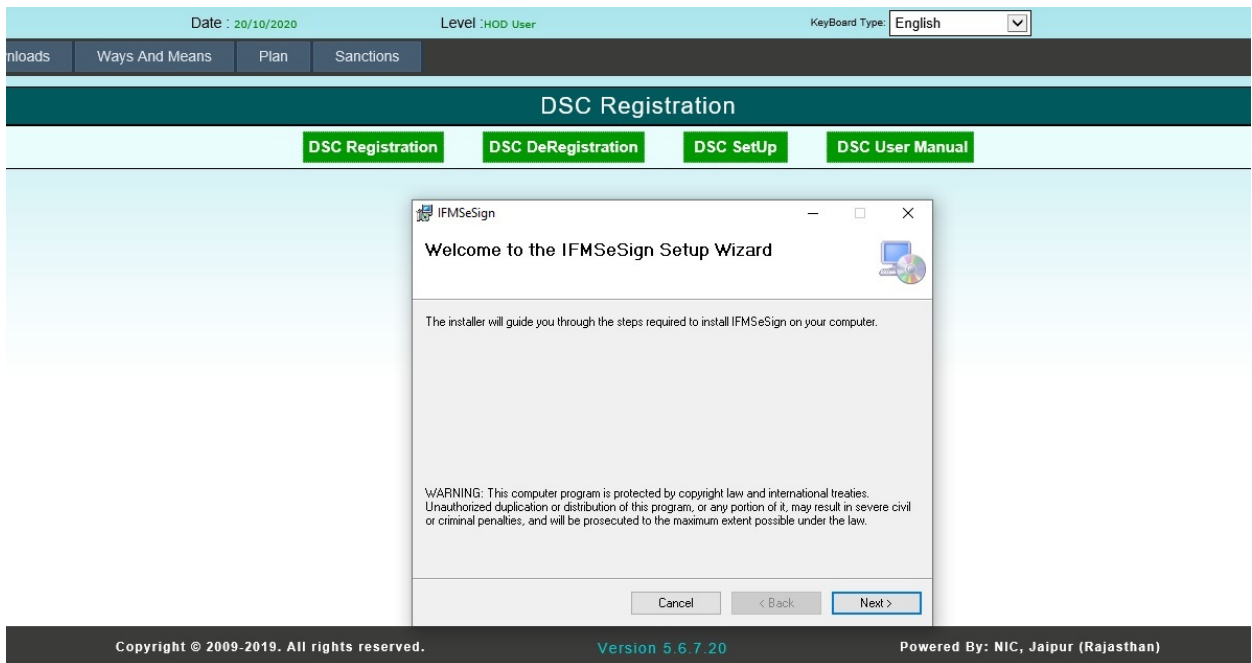
Click on (**Save**) button to save the setup file or Click on (**Run**) button to install the setup file without saving the setup file.



(Figure 2.4)

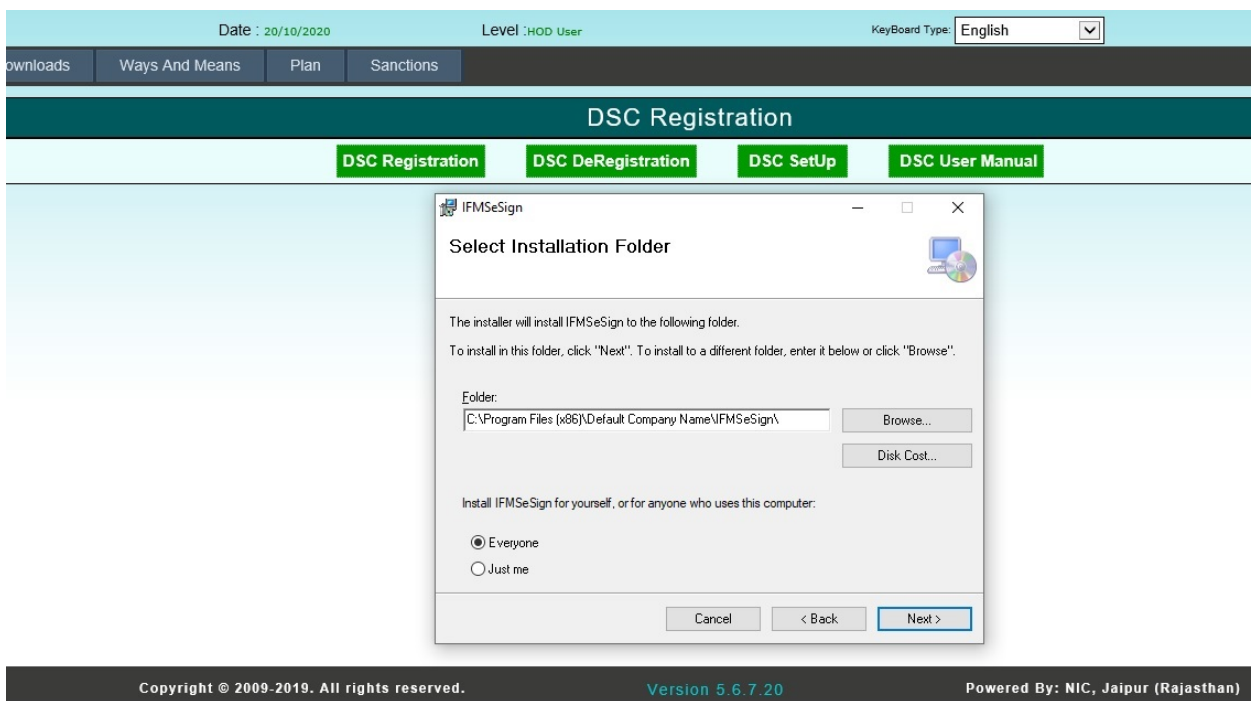
Figure 2.4 shows the saved setup file. Double Click on the file to install the setup.

Integrated Financial Management System



(Figure 2.5)

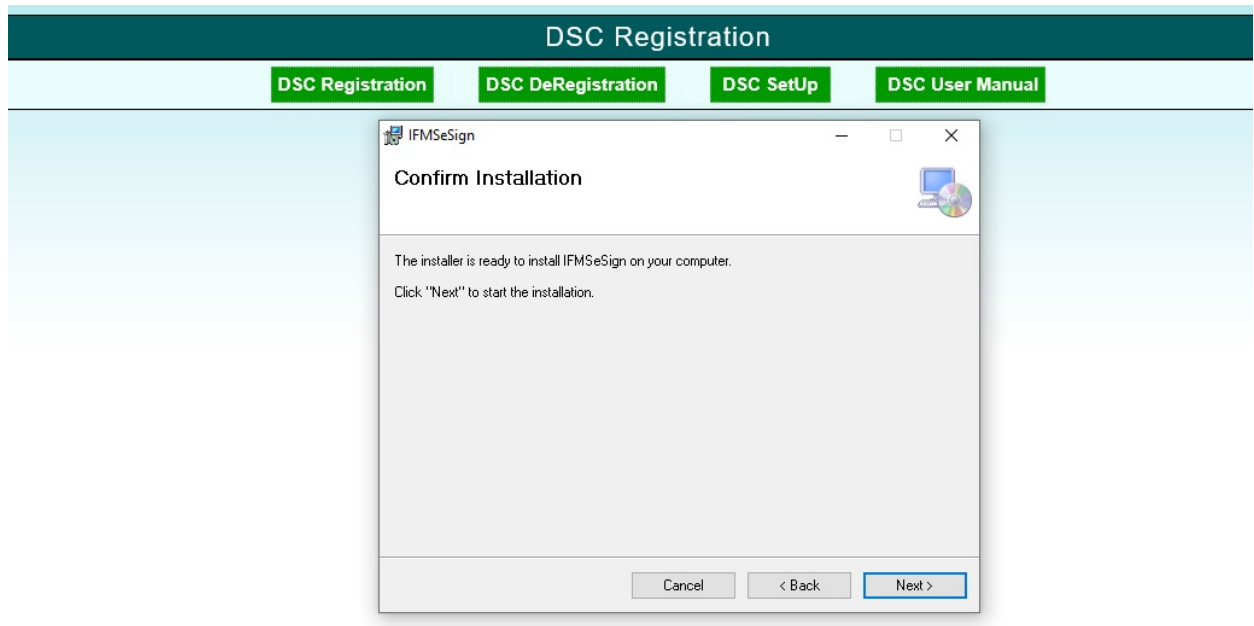
Figure 2.5 shows installation in progress. Click on the **(Next)** button to install the setup and follow the setup wizard instructions.



(Figure 2.6)

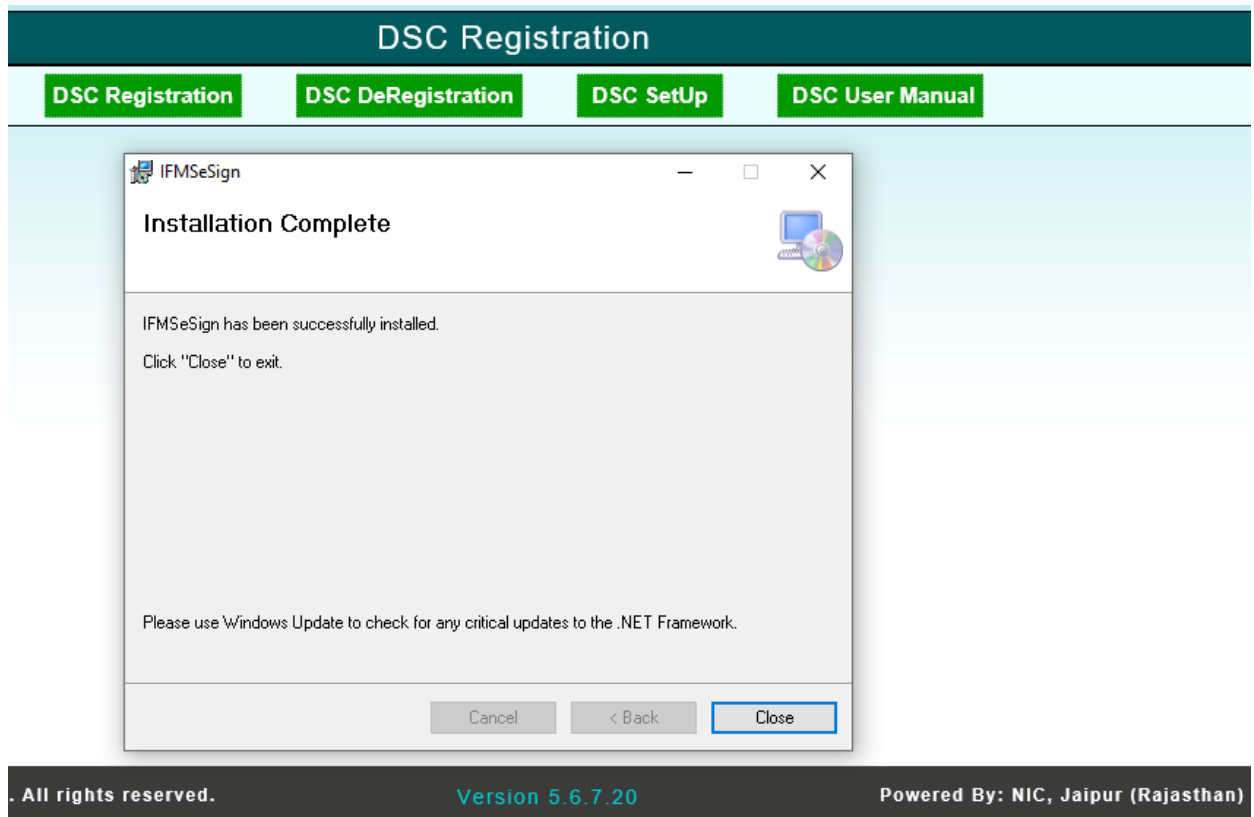
Figure 2.6 shows the next step of setup installation. Click on **(Next)** button to go for next step.

Integrated Financial Management System



(Figure 2.7)

Figure 2.7 shows the confirmation of setup on your pc. Click on **(Next)** button to go for next step.

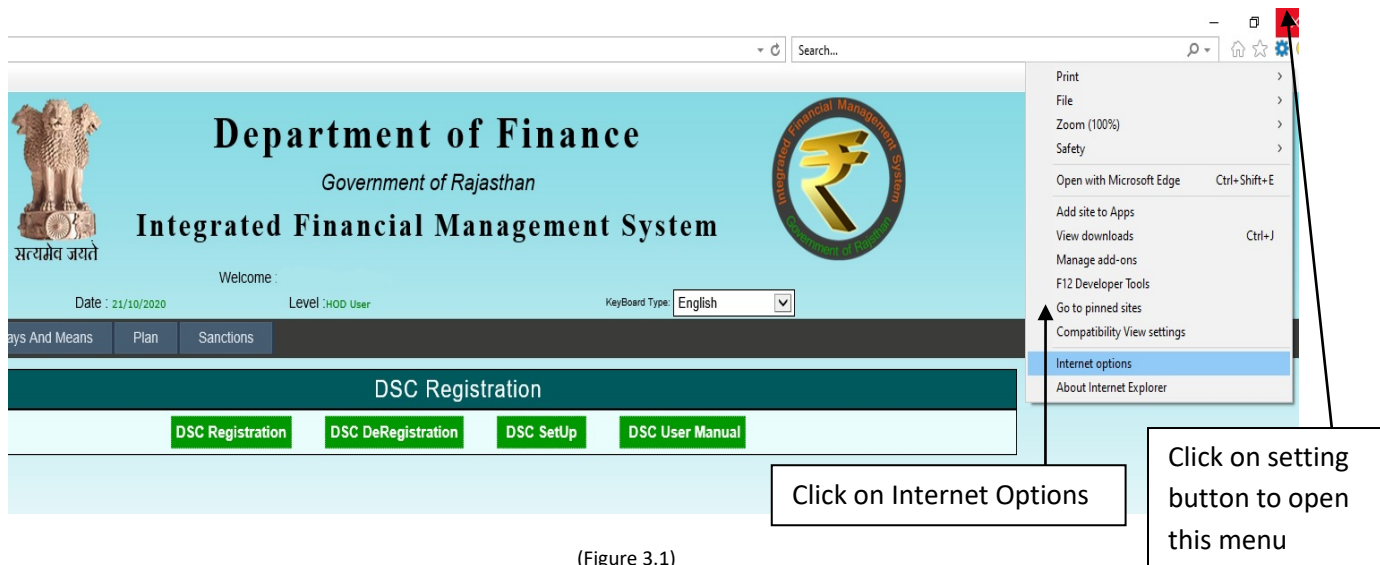


(Figure 2.8)

Figure 2.8 Click on **(Close)** button to complete the setup installation. **Now your DSC device is ready to use for Digital Signature.**

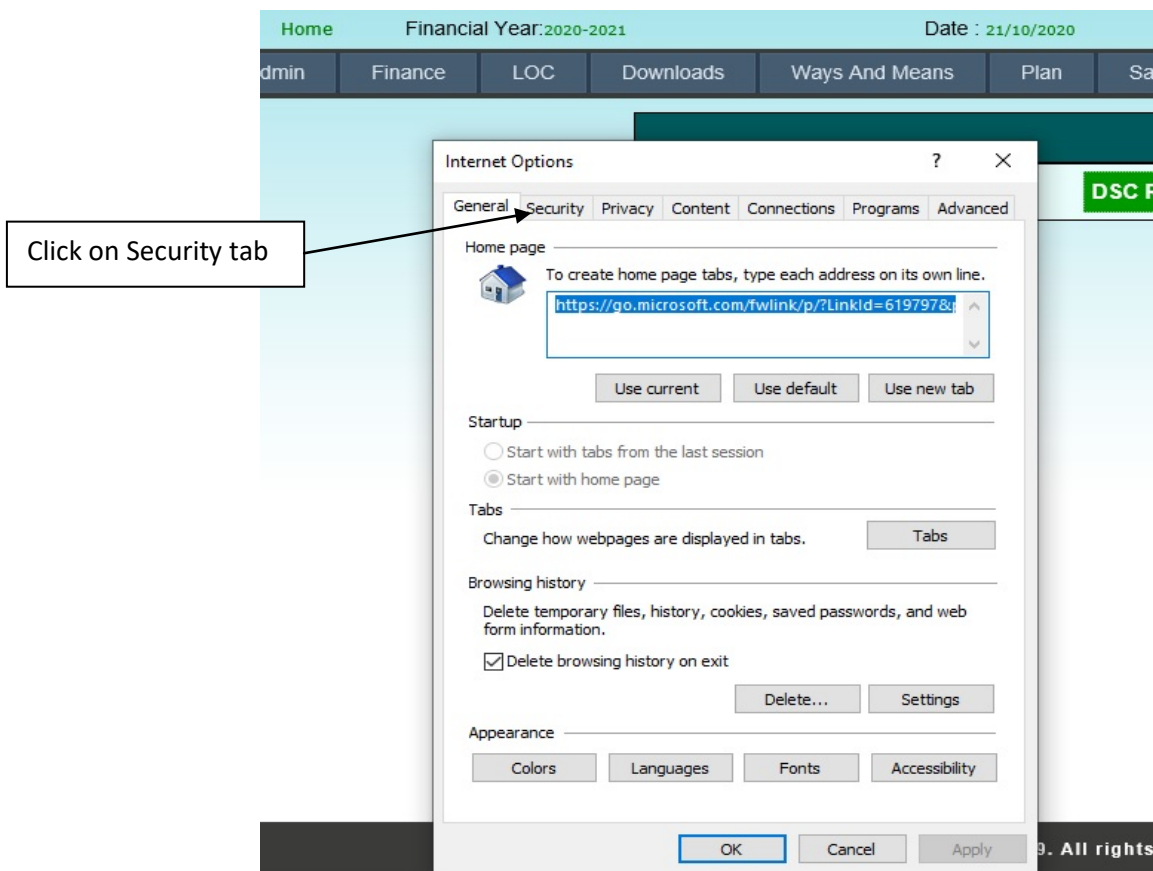
Integrated Financial Management System

3. Activex Setting Manual



(Figure 3.1)

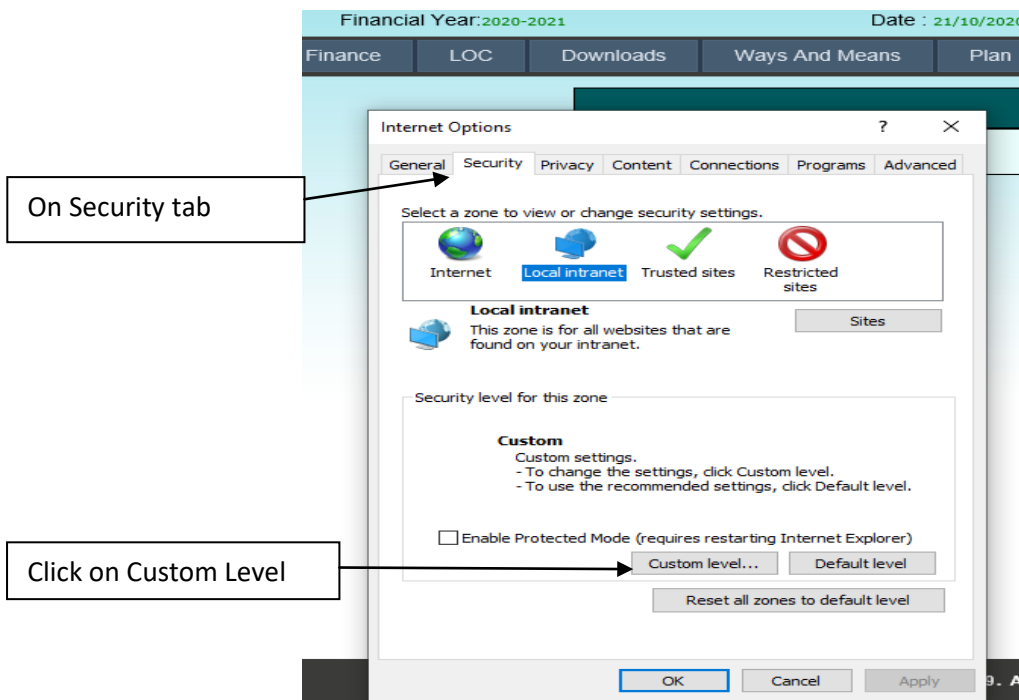
Open internet explorer and click on setting button as shown in figure 3.1 and then select [**Internet Options**] menu to change browser settings. A popup window appears as shown in figure 3.2.



(Figure 3.2)

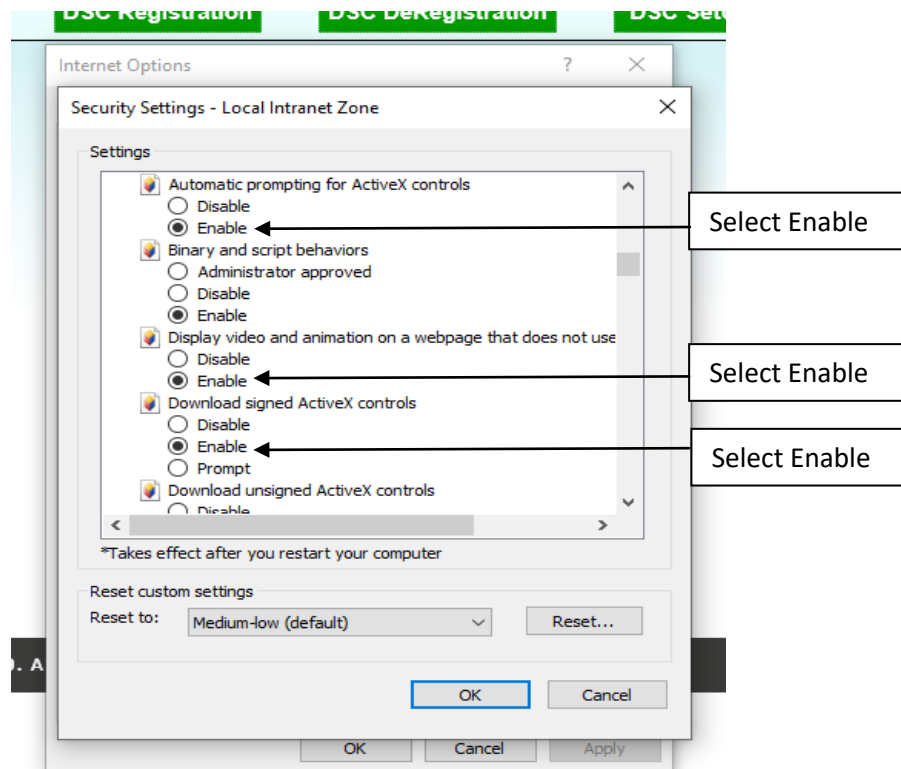
Click on [**Security**] tab as shown in figure 1.17.

Integrated Financial Management System



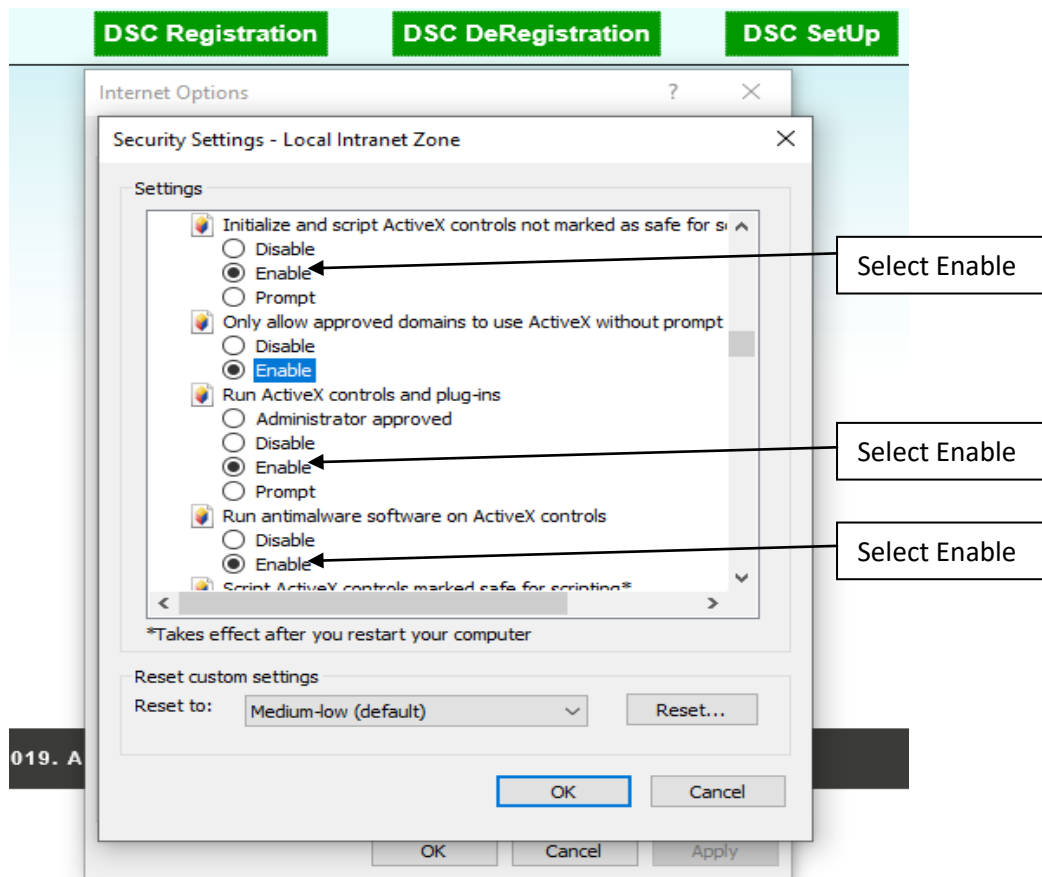
(Figure 3.3)

Now click on [Custom Level] button as shown in figure 3.3. When this button is clicked a popup window appears as shown in figure 3.4.



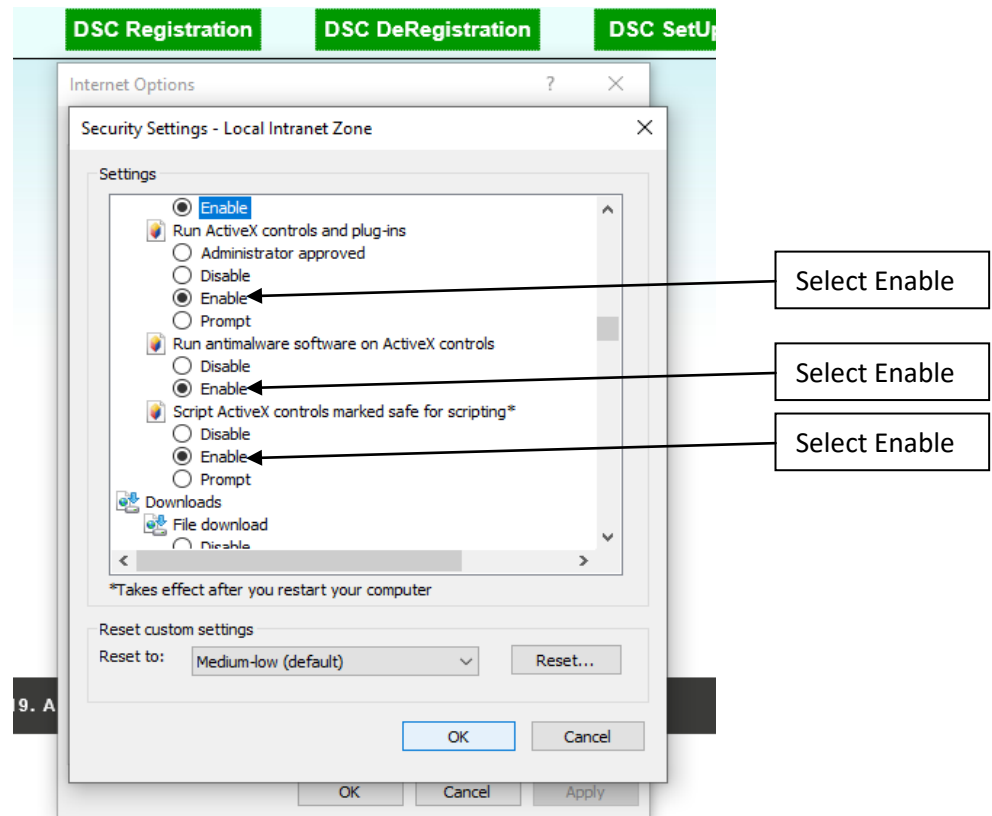
(Figure 3.4)

Integrated Financial Management System



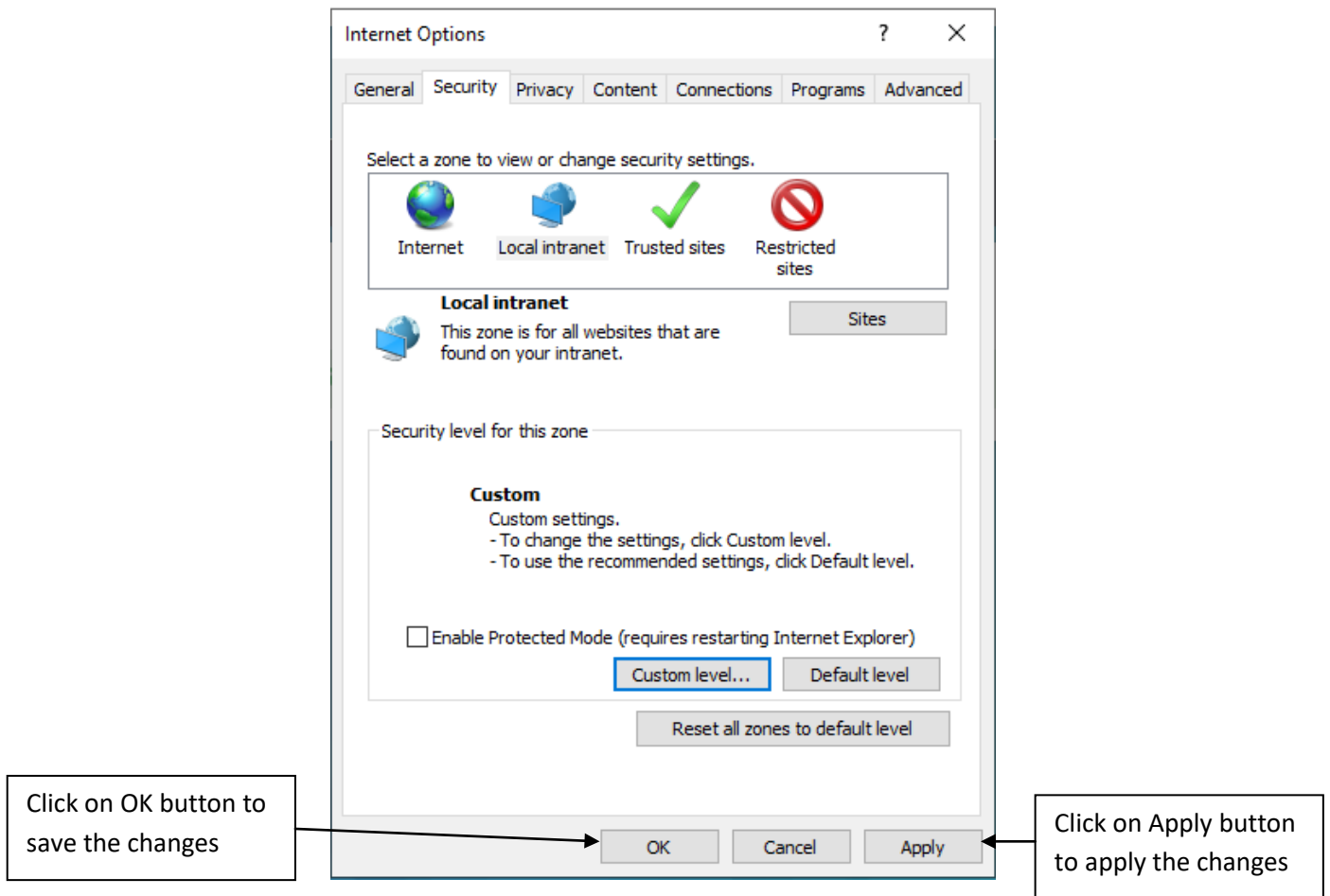
(Figure 3.5)

Integrated Financial Management System



(Figure 3.6)

Integrated Financial Management System



(Figure 3.7)

Select Enable All setting in above figure 3.4, 3.5 and 3.6. After making changes click on **[Save]** button and click on **[Apply]** button and then click on **[OK]** button to save the changes.

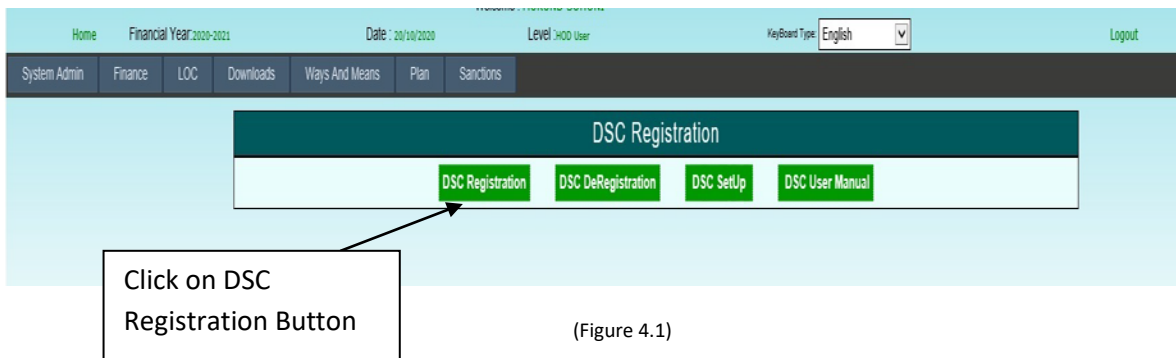
Now your Internet explorer is ready for Digital Signature.

Integrated Financial Management System

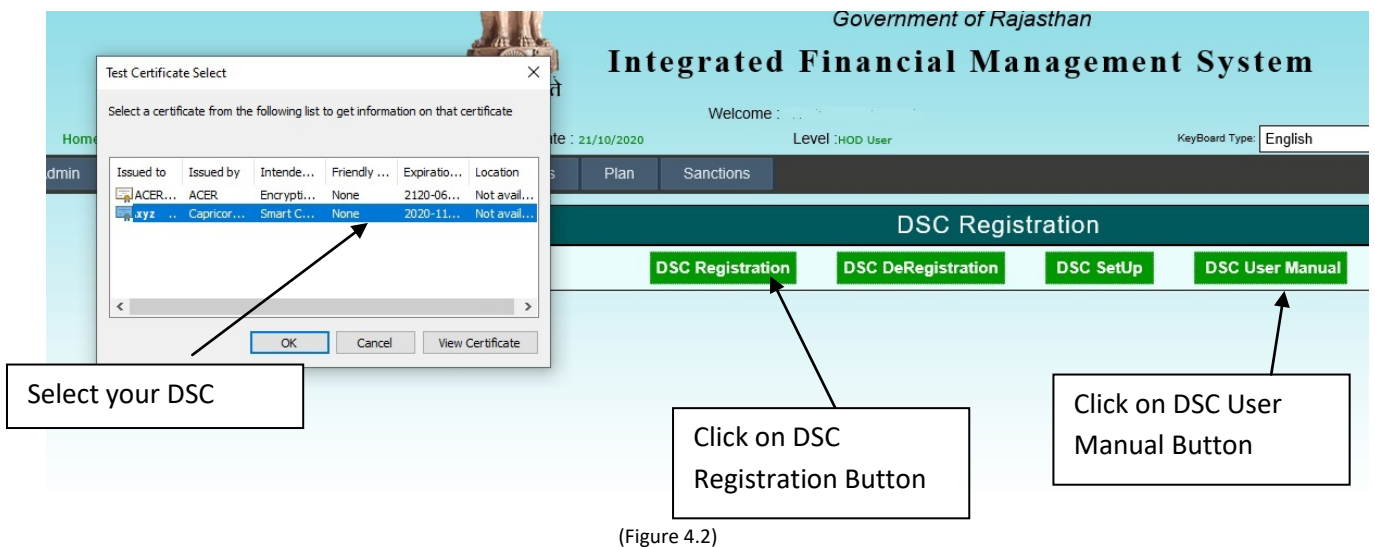
4. DSC Registration Manual

To Registration of DSC, Please use Internet Explorer and follow the setp given below.

Login into the system and click on DSC Regstration link as shown in belwo figure 4.1

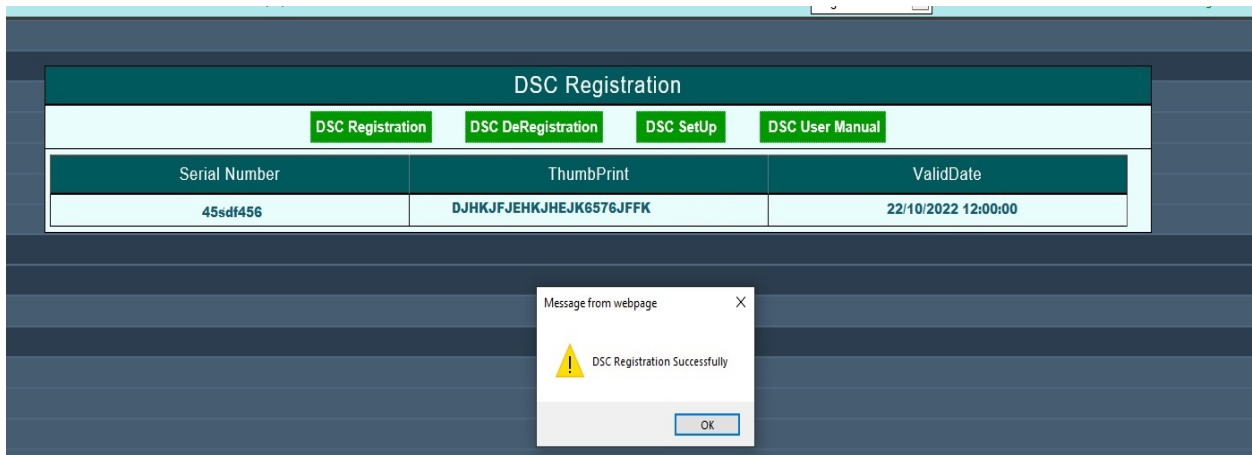


click on DSC Regstration Button as shown in belwo figure 4.1 then A popup window (Test Certificate Select) appears as shown in figure 4.2. Then select your Certificate and click on [OK] button



Integrated Financial Management System

Now your DSC Successfully registered and display detail as shown in below figure 4.3.



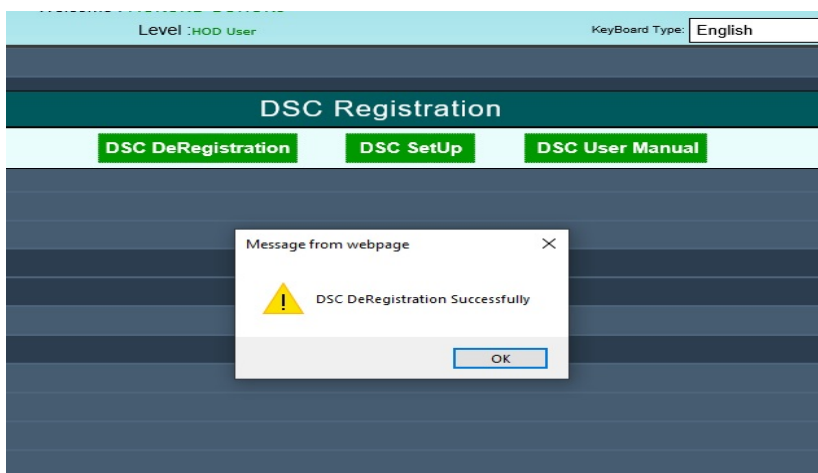
(Figure 4.3)

Click on DSC DeRegistration button A popup window (Test Certificate Select) appears as shown in figure 4.4. Then select your Certificate and click on [OK] button



(Figure 4.4)

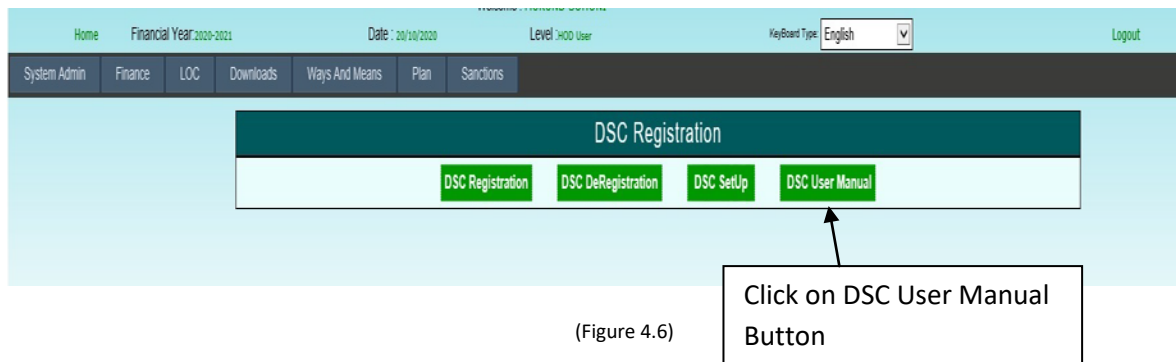
Now your DSC Successfully Deregistered and display detail as shown in below figure 4.5.



(Figure 4.5)

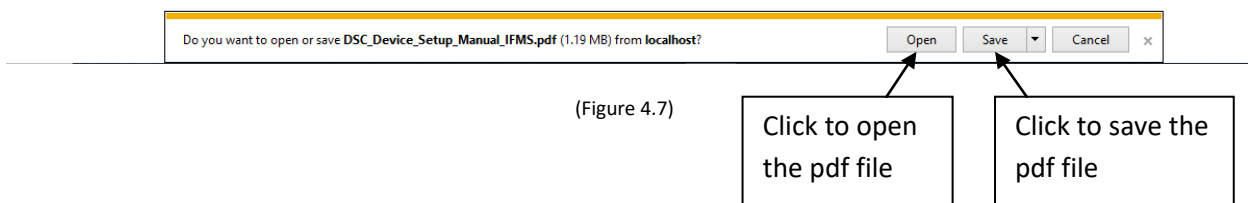
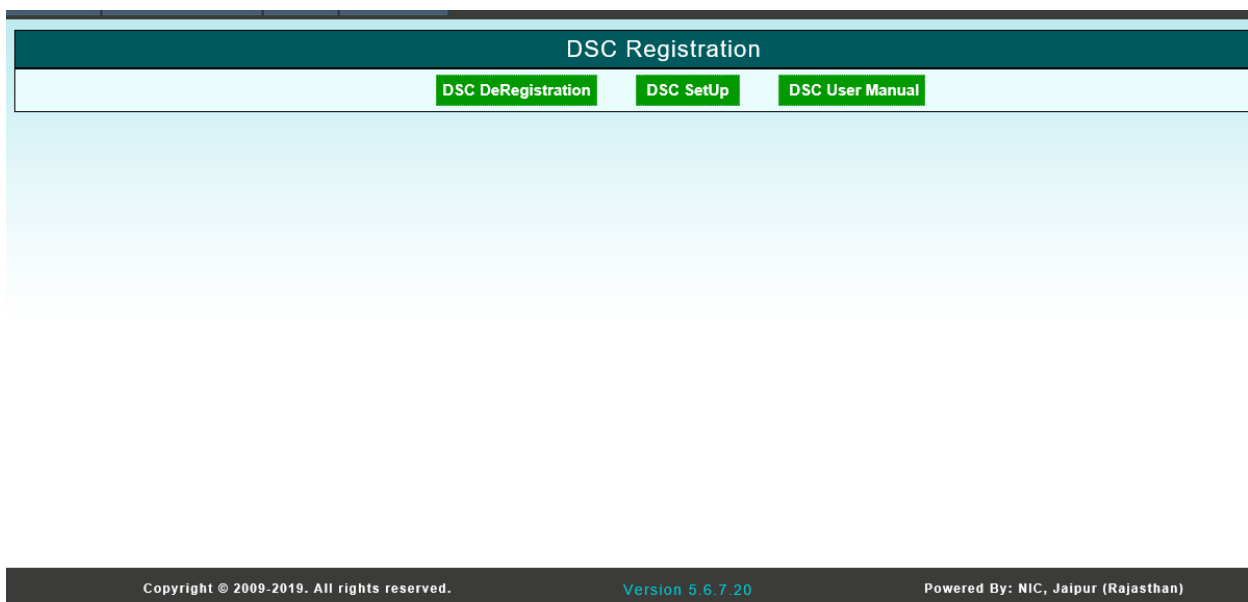
Integrated Financial Management System

As shown in above figure (4.6) click on (DSC User Manual) button to download the pdf file



(Figure 4.6)

After clicking on this, pdf file will get download as shown in below figure 4.7.



(Figure 4.7)